



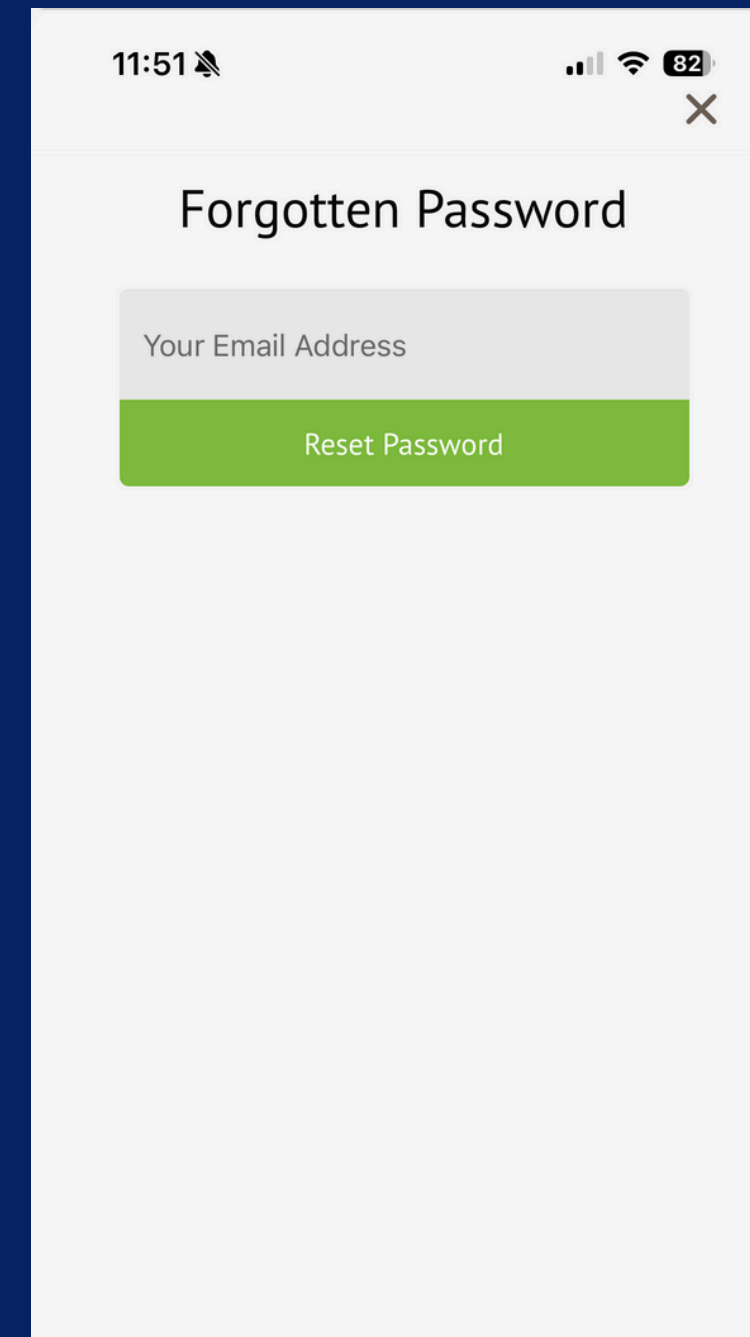
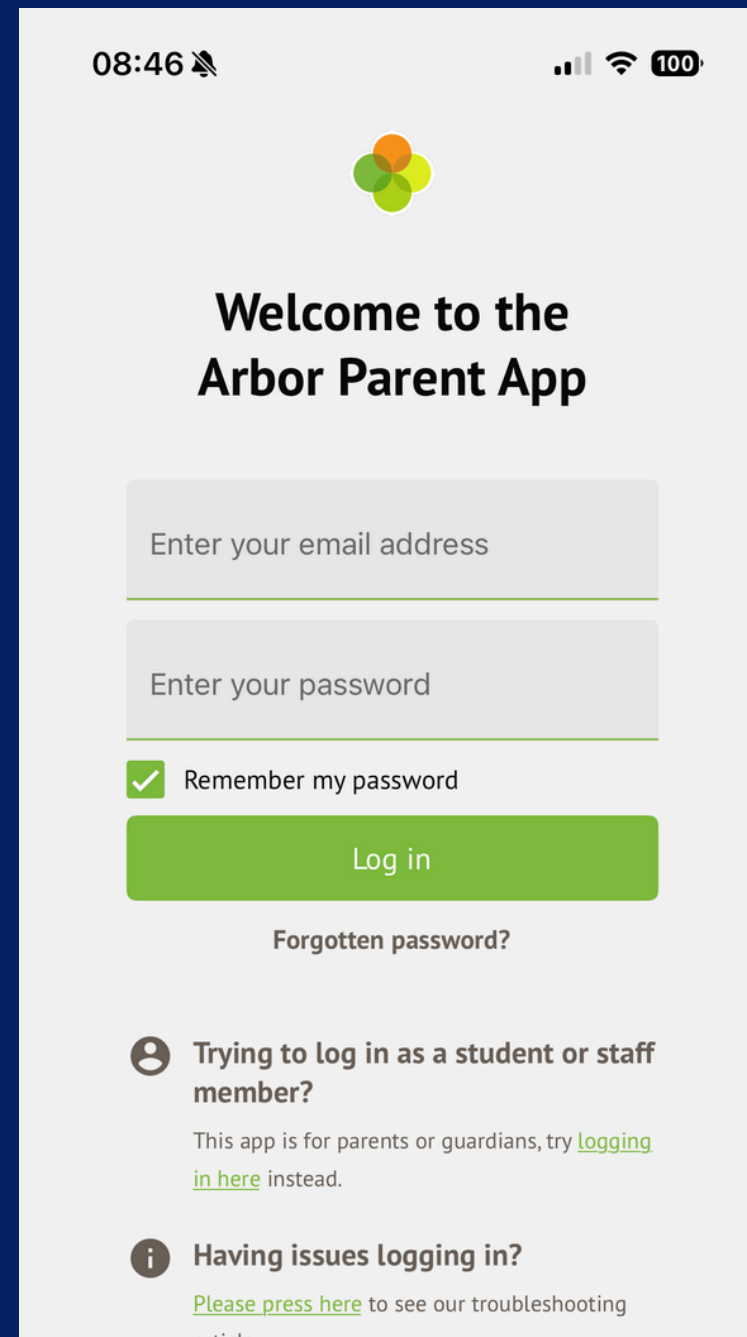
**Manchester Academy**

The best in everyone™

Part of United Learning

# How to Reset Your Password & Add Emergency Contacts to Arbor

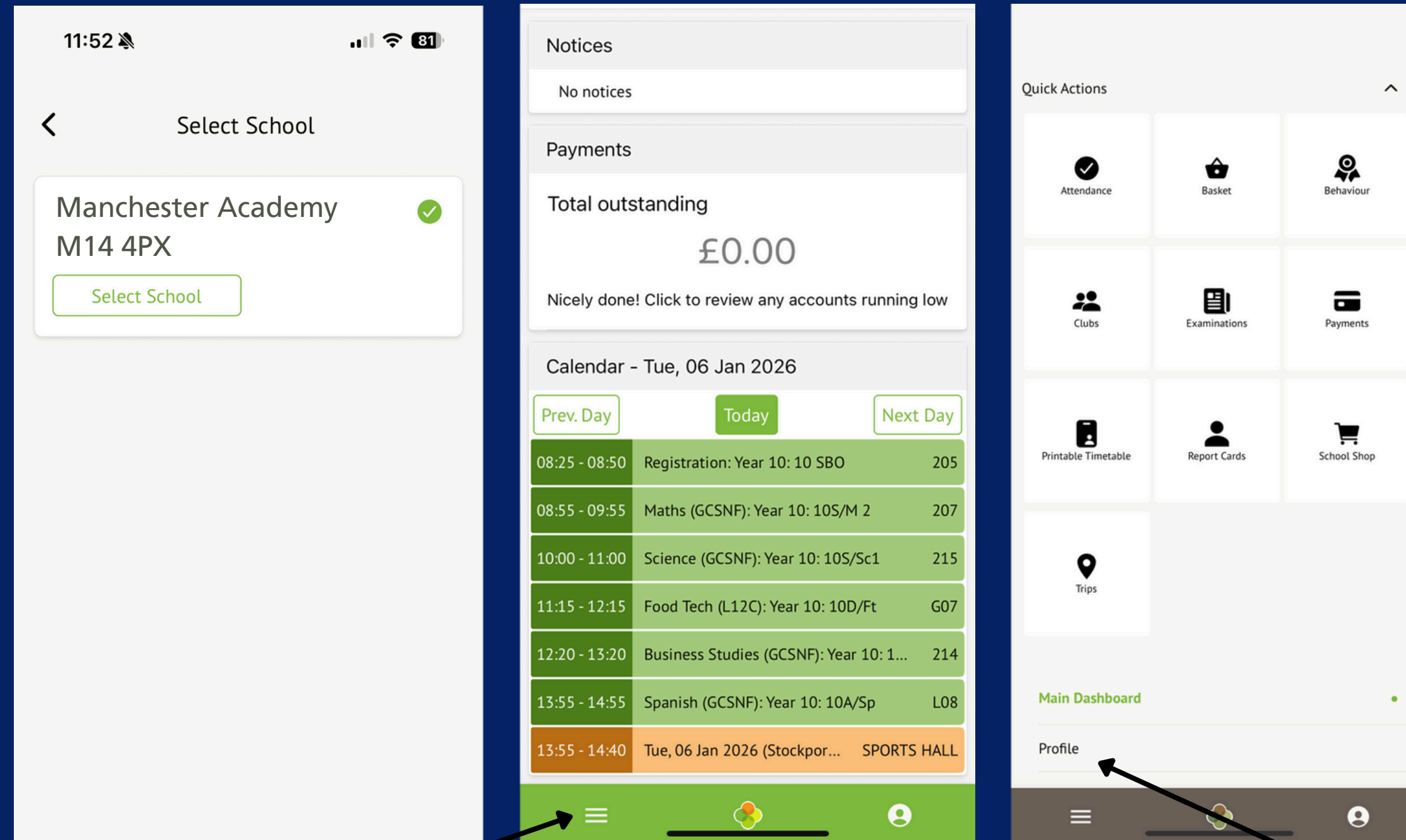
## Make Manchester **Magic**



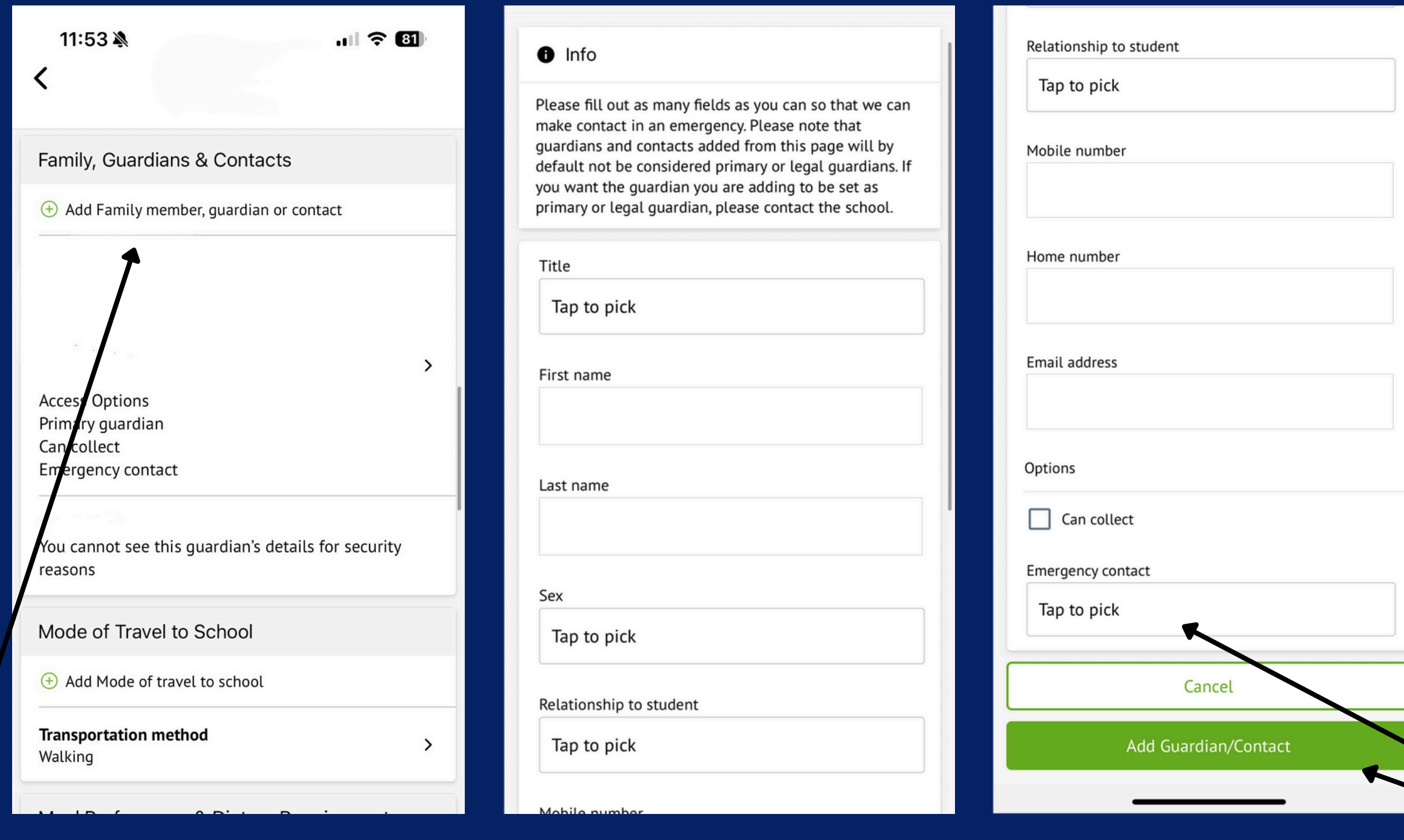
Log into your Arbor app

If you have forgotten your password or struggling to log in, click 'Forgotten Password' and enter your email address.

You will get an email sent from Arbor, click the link and update your password.



Select 'Manchester Academy'  
You will then enter your Arbor account  
Click the 3 lines at the bottom which will take you to another screen,  
where you need to click 'Profile'



This will take you to all your profile information. Scroll down to 'Family, Guardians & Contacts'

Select 'Add Family Member, Guardian or Contact'

Then fill in the contact information - please make sure you select 'Emergency Contact'

Click Add Guardian Contact

This will then send to school, where we will approve the contact. This will then appear on your child's profile. This does not allow them access to an Arbor account.

Please note for GDPR reasons you will not be able to see the contact details of any parent, guardian or contact that is added to the account, other than their name.

If you have any questions or are struggling to add an additional emergency contact, please email:  
[arbor@manchester-academy.org](mailto:arbor@manchester-academy.org)